



Mildenhall College
ACADEMY

MCA6

Mildenhall College Academy
Sixth Form Centre



Prospectus 2026

www.mildenhall.attrust.org.uk

Welcome

Welcome to Mildenhall College Academy and especially **MCA6**, our dedicated sixth form centre. You will see from this prospectus and our website the excellent facilities and range of subjects we have to offer. We are really excited to be part of the 'Mildenhall Hub' which has the Academy and Sixth Form at the heart of it. Sixth Form students now have access to state-of-the-art sports facilities including; an Olympic swimming pool, all weather pitches, over 170-piece gym, modern library and health facilities. Not only does this offer access to facilities for lesson and personal use but also for work experiences across a range of industries and professions.

Every young person deserves an excellent education and an opportunity to attend a Sixth Form provision that understands their individual needs, allowing them to thrive and be happy, and help them achieve academic success whatever their ability or circumstances. I believe the inspirational teaching, safe and caring environment, expert advice and guidance along with the wide range of high-quality enrichment opportunities that **MCA6** provides, all learners can achieve. My aim is for all learners in our Sixth Form to develop their knowledge, talents and values so they can be successful and make a positive contribution to their community.

Miss C Coxall Director of Sixth Form



Miss C Coxall
Director of Sixth Form

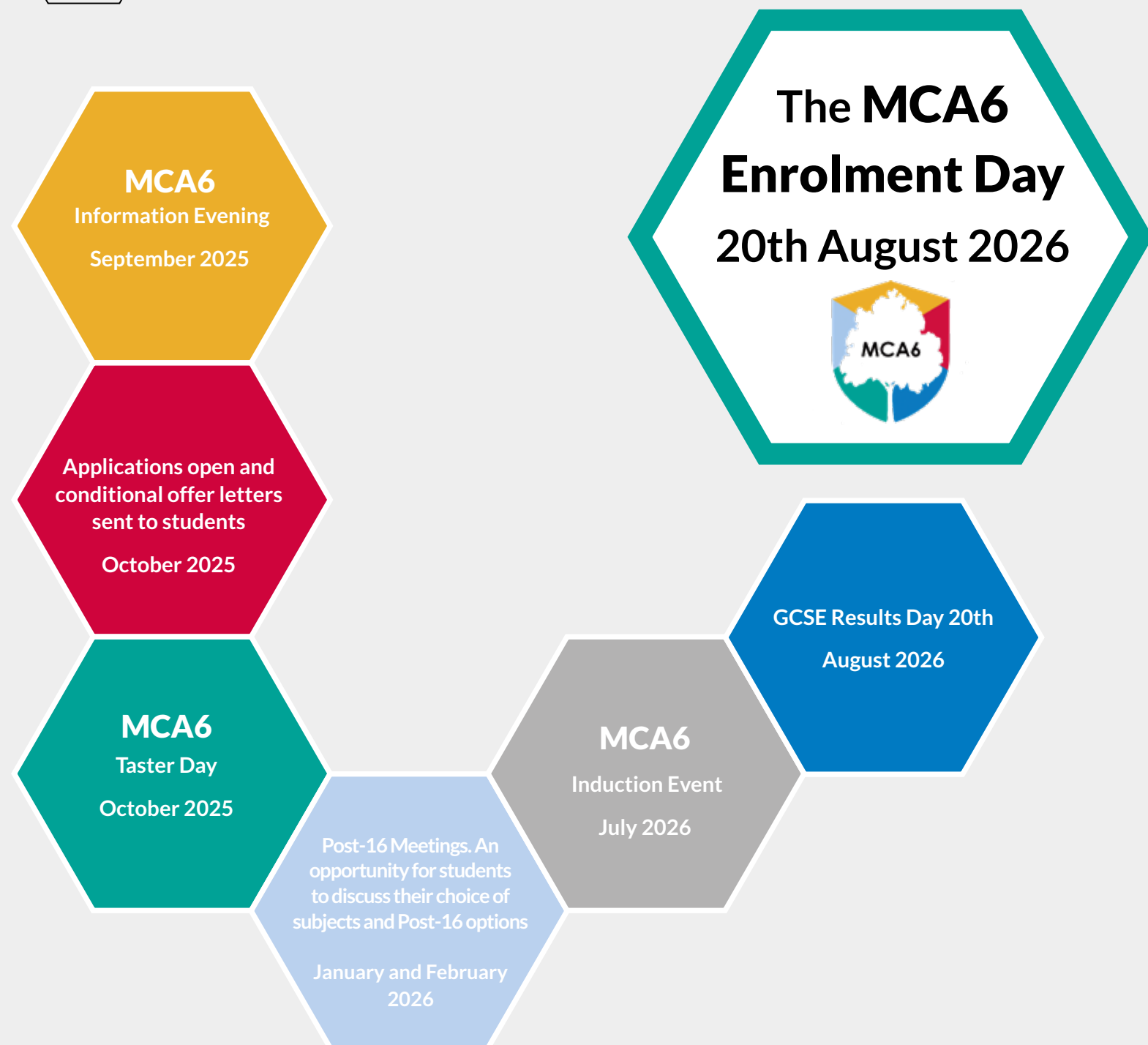
At Mildenhall College Academy our aims are for every student to:
Achieve academic excellence; Be the best they can be; Contribute positively to the community.

We seek to do this through our MCA TRAITS and also our core principle of Work hard; be kind.

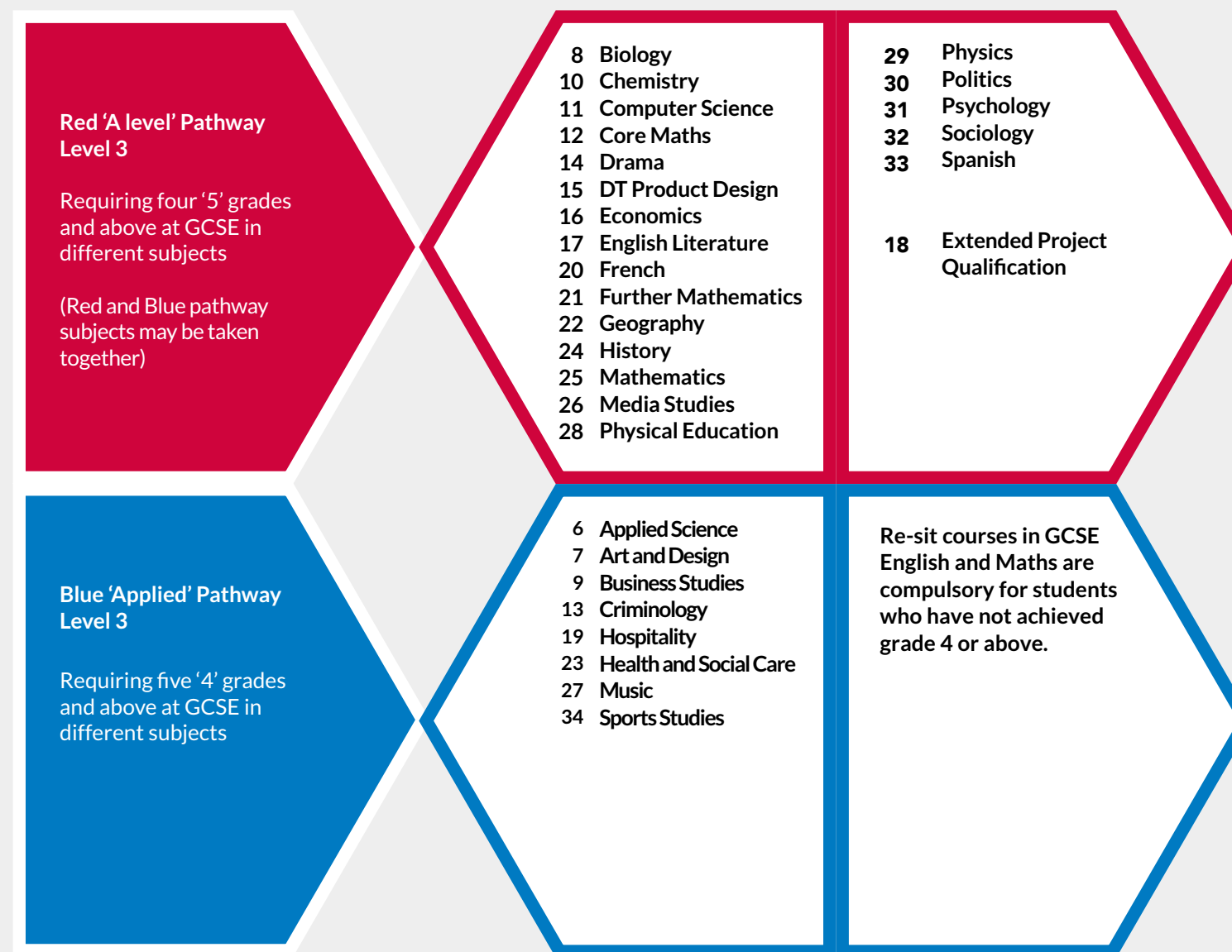
In addition to subject specific lessons at **MCA6** students will also benefit from a strong personal development programme with a Sixth Form tutor, skills for life sessions (SKL), assemblies, visitors and trip and enrichment opportunities. Enrichment is an important part of sixth form life and all students led by the prefects help to shape the trips, visits, clubs and activities which take place. This will include work experience, community action and the mid-summer ball the social highlight of the academic year! We look forward to welcoming you to **MCA6**.



Countdown to Sixth Form



Pathways



Applied Science

For those students who have enjoyed Science at GCSE this course allows a more in depth look at topics across the three Science disciplines.

In the first year, students will develop their practical skills in a wide range of experimental work. They will analyse and evaluate their own progress in practical work through a series of assignments.

Students will learn about key concepts in Biology, Chemistry and Physics through theory-based lessons for the examination element.

In the second year, students will further develop their practical skills through another assignment-based unit.

The course is based on up-to-date content and allows learners to develop the knowledge, understanding, skills and attributes required in the sector.



Qualification:

Pearson Level 3 Alternative Academic Qualification BTEC in Applied Science (Extended Certificate).

Assessment:

Two internally assessed and externally moderated units. Three externally set examined units.

Progression Route:

University, apprenticeship or employment in science, healthcare or laboratory-based work.

Web Link: <https://qualifications.pearson.com/en/qualifications/btec-nationals/applied-science-aag.html>

For more information about this course or entry requirements please contact: Mrs Baldry

Art & Design

Our Art & Design programme offers an exciting, hands-on experience where creativity meets real-world application. Students respond to design briefs that may involve solving visual challenges, producing work for public exhibition, or creating commissioned pieces for clients. There is flexibility to specialise in Photography, Fashion, or Fine Art, or to explore ideas across multiple disciplines.

The course fosters individual expression and experimentation. Students are encouraged to push creative boundaries, exploring an extensive range of materials, techniques, and artistic processes to build their skills and shape a personal style. As part of their creative journey, students will:

Investigate the work of influential artists and designers, analysing how meaning and communication are embedded in creative practice. Undertake first-hand research through photography, site visits, and observational studies. Develop ideas through experimentation with diverse media such as paint, clay, printmaking, and sculpture.

Alongside practical work, students gain insight into a variety of traditional and contemporary production techniques, deepening their understanding of professional creative practice.

Learning takes place in our well-equipped Art rooms whilst students have individual work space in the Art Studio for outside of lesson development. The course is primarily assessed through coursework, complemented by externally set tasks and practical exams. Students complete a range of core and specialist units tailored to their area of focus.

Students are expected to provide:
A sketchbook and portfolios when needed.
Basic art supplies (e.g. pencils, erasers, rulers)
Any additional specialist materials for individual projects

The academy supplies essential materials such as paper, paints, clay and printmaking tools.

Qualification:

BTEC Level 3 Art & Design

Assessment:

Extended Certificate (equivalent to 1 A Level): 50% coursework, 50% externally assessed exam

National Diploma (equivalent to 2 A Levels): 62.5% coursework, 37.5% exam

Progression Route:

This qualification opens the door to a wide range of creative futures — from university-level study and creative apprenticeships to direct employment in the art, design and media industries.

Web Link: <http://qualifications.pearson.com/en/qualifications/btec-nationals/art-and-design-2016.html#tab-1>

For more information about this course or entry requirements please contact: Miss Moles-Smith



Biology

For those students who have enjoyed Biology at GCSE this course allows a more in depth look across a range of topics.

In the first year, students will study topics which will build on GCSE knowledge. These include biological molecules, cells, organisms exchange mechanisms and genes. In the second-year topics will include energy transfers, organisms responses, genetics and populations and control of gene expression.

Throughout the course students will develop their practical skills and will be assessed on this on a regular basis. The practical work will enhance their understanding of key concepts covered within the theory lessons.

Studying Biology can help prepare you for a range of careers in Science and Research. Biologists work over a range of different disciplines that explore the make-up of living things.

Qualification:

A Level

Assessment:

3 examinations at the end of Year 13. Assessment of practical skills throughout the course.

Progression Route:

University, apprenticeship or employment in science, healthcare or laboratory-based work..

Web Link:

<http://www.aqa.org.uk/subjects/science/as-and-a-levelbiology-7401-7402/specification-at-a-glance>

For more information about this course or entry requirements please contact: Mrs Wetton



Business Studies

The focus of the Business Studies course is to develop a foundation of skills, knowledge and understanding required for the 21st century. The course covers a wide range of topics. A variety of assessment techniques will be used including written examinations, presentations, role plays and coursework assignments.

Students will learn by applying their skills, knowledge and understanding to tasks and activities that are relevant in business. Key skill development will be in communication, team work, planning and organisation. Work experience is offered to all Year 12 students so students can apply their skills and knowledge in a contextual setting.

Cambridge Technicals are designed to help students to prepare to meet the expectations of employers and develop entrepreneurial skills. Level 3 students may progress to study a range of courses at university or enter their chosen career. Options include banking, administration, retail, IT, marketing, human resources, law or management.

Qualification:

Cambridge Technical Level 3 (2016 suite)
Extended Certificate in Business
Cambridge Technical Level 3 (2016 suite)
Diploma in Business.

Assessment:

External and Internal assessment.
• Extended Certificate in Business: 2 external examinations and 3 coursework units
• Diploma in Business: 4 external examinations and 6 coursework units

Progression Route:

University, apprenticeship or employment in the business sector.

Web Link:

<https://www.ocr.org.uk/qualifications/cambridge-technicals/business/#level-3>

For more information about this course or entry requirements please contact: Mrs Wilmshurst



Chemistry

Why Study Chemistry? The answer is simple - Chemistry underpins everything in our modern life-style. For example, it is Chemistry that enables us to convert crude oil into petrol, plastics and fibres. Chemistry invented Nylon, Terylene and Lycra. It makes vital medicines, creates fertilisers, purifies water and monitors our seas and atmosphere for pollutants.

The range of careers available to someone with a Chemistry qualification is greater than with most other qualifications. The chemical and pharmaceutical industries are two of the largest employers in the manufacturing industries. Chemists are also employed in related areas such as Biotechnology and Electronics.

Chemistry can lead to many other disciplines; many employers recognise the value of skills developed in this subject, such as logical thought, numerical and communication skills and the general education that a Chemistry course provides.

Qualification:
AQA A level Chemistry

Assessment:
Assessment of practical skills throughout the course. 3 written examinations at the end of Year 13.

Progression Route:
University, apprenticeship or employment in science, medicine, veterinary, healthcare or laboratory-based work.

Web Link: www.aqa.org.uk/subjects/science/as-and-a-level/chemistry-7404-7405

For more information about this course or entry requirements please contact: Mrs Wetton



Computer Science

The Computer Science course is designed to give you a secure understanding of how computers work and to further develop your problem-solving skills. Whilst studying this course you will develop your ability to think logically, abstractly and procedurally. You will further your understanding of how computers affect society and you will start to gain an understanding of how computers use Boolean logic.

This course links closely with Mathematics so students should have robust Mathematical skills or be studying A-Level Mathematics. It is also a course recommended for students planning on studying any Science at university as you will likely need to know how to program.

The course is broken down into three sections. Component 1 looks at the hardware, software and other computing fundamentals. Component 2 looks at students understanding of algorithms and Component 3 is a programming project to solve a real-world problem. You will be given freedom to choose your topic for this.

You do not need to have studied Computer Science at GCSE but should have a good understanding of Mathematics and Science.



Qualification:
OCR A Level

Assessment:
2 External examinations and programming project.

Progression Route:
University, apprenticeship or employment in computer science, IT or related industries.

Web Link: <https://www.ocr.org.uk/Images/170844-specification-accredited-alevel-gce-computer-science-h446.pdf>

For more information about this course or entry requirements please contact: Mr West



Core Maths

Core maths was introduced by the government in 2014 to allow students further opportunity to study maths beyond GCSE. The qualification runs for two years and is equivalent to an AS level. An increasing number of good universities are recognising the value of core maths and are reducing their entry requirements to holders of the qualification as a result.

The focus of the course is on the application of maths to a variety of contexts, using mathematical skills to solve real problems. It is context driven, with the maths being applied to match the situation, rather than the other way round. The contexts cover a wide range of areas, including social media, engineering, art, finance and sport. As well as enhancing mathematical skills, there is an emphasis on using technology to analyse and present information.

The course will especially suit those who are undertaking further study in areas which involve some maths, such as geography, psychology and biology. There are two exams at the end of year 13. The comprehension paper involves analysis of a source booklet published around 6 weeks before the exam. There are 60 marks available here. The application paper is worth 80 marks, and involves the analysis of another booklet, seen for the first time in the exam. Both exams are 90 minutes long.



Qualification:

AS level 3 Core Maths Edexcel

Assessment:

100% examination at end of Year 13
Paper 1: Comprehension - pre-released material (approximately 40%; 1 hour 40 minutes)
Paper 2: Application - unseen material (approximately 60%; 1 hour 40 minutes)

Progression Route:

Numerous universities, apprenticeship or employment routes.

Web Link: <https://qualifications.pearson.com/en/qualifications/edexcel-mathematics-in-context/mathematics-in-context.html>

For more information about this course or entry requirements please contact: Mrs Roddy

Criminology

Criminology is the scientific study of the nature, extent, management, causes, control, consequences and prevention of criminal behaviour, both on individual and social levels. Criminology is an interdisciplinary field in both the behavioural and social sciences, drawing especially upon the research of Sociologists, Psychologists and Philosophers. This is an exciting course which allows students to gain a wealth of new knowledge linked to the criminal justice system and theories and concepts relating to the cause of crime. Students will have the opportunity to acquire both practical and academic skills through applied learning such as crime scene analysis. There is also practical input from visiting practitioners in the criminal justice sector. Units studied over the two years are:

Unit 1: Changing awareness of crime
Unit 2: Criminological theories
Unit 3: Crime scene to courtroom
Unit 4: Crime and punishment

The course will equip students with a range of transferable skills such as research, independent working, time management and problem solving. Students will also develop their skills of analysis, evaluation and application of knowledge.



Qualification:

WJEC Level 3 Diploma in Criminology. CBAC

Assessment:

: WJEC Level 3 Diploma in Criminology. CBAC
Assessment: 4 Units over two years.
• Units 1 and 3 are assessed through controlled assessment, internally assessed and externally moderated.
• Units 2 and 4 are assessed through external exams.

Progression Route:

University, apprenticeship or employment in a range of areas including criminology, the social sciences and law.

Web Link: <http://www.wjec.co.uk/qualifications/criminology/>

For more information about this course or entry requirements please contact: Miss Lavender



Drama

You can develop your existing performance ability and use this towards achieving an A level. You'll gain confidence, build team-working skills, visit theatres and have fun. You'll have a mix of practical and written work.

This is an exciting and inspiring course. You will :

- collaborate in devising your own piece of theatre and perform in a performance from a text.
- perform in a reinterpretation of a text performance which is a combination of selected text and original ideas. You will
- explore a range of texts and view a variety of live theatre productions.

The specification has three components:

1. Theatre Workshop 2. Text in Action 3. Text in Performance

You will have the opportunity to learn and develop a range of transferable skills and practise applying these to new situations. These include analytical, problem-solving, organisation and time-management skills. You will also be able to work collaboratively to generate, develop and communicate ideas, all of which will develop your emotional intelligence. Your practical skills will be refined and will demonstrate creativity, reflection and resilience, as well as developing confidence and strong presentation skills. Your written skills, both analytical and creative, as well as your ability to self-reflect, will be developed through a range of tasks.



Qualification:

EDUQAS A Level Drama and Theatre

Progression Route:

The study of creative subjects, like Drama, is becoming even more important and relevant to young people to give you the chance to succeed – whatever your ambitions! The possibilities are endless. Drama will enable you to demonstrate many skills which employers, colleges and universities will be looking for like higher order thinking and considering ideas which go beyond language. It can also give you opportunities to travel, meet people and get the most out of life.

Web Link: <https://qualifications.pearson.com/en/qualifications/btec-nationals/performingarts-2016.html>

For more information about this course or entry requirements please contact Mrs Harper

DT Product Design

This creative and thought-provoking qualification gives students the practical skills, theoretical knowledge and confidence to succeed in a number of careers especially those in the creative industries. You will investigate historical, social, cultural, environmental and economic influences on design and technology, whilst enjoying opportunities to put your learning into practice by producing prototypes of your choice.

Students will gain a real understanding of what it means to be a designer, as well as acquiring the knowledge and skills sought by higher education and employers.



Qualification:

AQA A Level

Assessment:

Two examinations worth 50% and 50% coursework.

Paper 1:

- Written exam: .2.5 hours
- 120 marks
- 30% of A-level

Paper 2:

- Written exam: 1.5 hours
- 80 marks
- 20% of A-level

Progression Route:

University, apprenticeship or employment in design or the creative industries.

Web Link: <http://www.aqa.org.uk/subjects/design-and-technology>

For more information about this course or entry requirements please contact: Mr West



Economics

A Level Economics explores the current economic problems and issues, and encourages students to appreciate the interrelationships between microeconomics and macroeconomics. Students will develop an interest in the world around them, locally, nationally and globally.

This course allows students to develop an ability to think as an economist, understand that economic behaviour can be studied from a range of perspectives and acquire analytical and quantitative skills which will equip them for the challenges, opportunities and responsibilities of adult and working life.

A Level Economics exam question papers use a variety of assessment styles including real-life case studies and data exercises to better prepare students for further study and employment.



Qualification:

AQA A Level Economics

Assessment:

Paper 1: Markets and market failure

- Written exam: 2 hours
- 80 marks
- 33.3% of A-level
- Section A: data response questions requiring written answers, choice of one from two contexts worth 40 marks.
- Section B: essay questions requiring written answers, choice of one from three worth 40 marks.

Paper 2: National and international economy

- Written exam: 2 hours
- 80 marks
- 33% of A-level
- Section A: data response questions requiring written answers, choice of one from two contexts worth 40 marks.
- Section B: essay questions requiring written answers, choice of one from three worth 40 marks.

Paper 3: Economic principles and issues

- Written exam: 2 hours
- 80 marks
- 33% of A-level
- Section A: multiple choice questions worth 30 marks
- Section B: case study questions requiring written answers, worth 50 marks

For more information about this course or entry requirements please contact: Miss Coxall

English Literature

English Literature is an opportunity to read widely, debate, participate in class discussions and write essays based on topics of your own choice. In Year 12 we will study 'Love Through the Ages' where the set texts are Shakespeare's Othello, F. Scott Fitzgerald's The Great Gatsby and a collection of Love Poetry that allows you to consider a range of approaches and poetic forms taken towards the topic of love. In Year 13 we shall focus on Literature post 1945 and consider the social, political and stylistic influences on Literature in recent years. The set texts are chosen from a selection and have in the past included Margaret Atwood's The Handmaid's Tale, Tennessee Williams' A Streetcar Named Desire and Carol Ann Duffy's The Feminine Gospels.

In addition, there will be coursework where you will have a free choice of topic that involves analysing two texts by two different authors – at least one of the texts must be written before 1900. The essay should be 2500 words and you should also consider other writers' ideas on your chosen topic.



Qualification:

Qualification: AQA A Level English Literature Syllabus A

Assessment:

Two written exams: Paper 1 is partially open book (2 out of 3 texts) with an unseen. Paper 2 is open book for all 3 texts with another unseen. Both papers are worth 40% with coursework 20%.

Progression Route:

University, apprenticeship and employment in a range of areas including English, Publishing, Journalism, Humanities and Law.

Web Link: [//www.aqa.org.uk/subjects/english/a-level/english-7712/specification](http://www.aqa.org.uk/subjects/english/a-level/english-7712/specification)

For more information about this course or entry requirements please contact: Mrs Roe



EPQ

The Extended Project Qualification (EPQ) allows students to select an area of personal interest and complete an investigation into that subject.

Completing the EPQ develops organisational, project management and independent learning skills which will be of considerable benefit to students as they progress through their Sixth Form studies.

The Extended Project Qualification is worth half an A Level in terms of UCAS points but whether you are considering university or employment the Extended Project Qualification will help you to stand out from the other applicants, particularly if you choose a topic which compliments your plans for the future.

Qualification:
EPQ AQA

Assessment:
100% coursework

Progression Route:
University, apprenticeship or employment in any sector.

Web Link: <https://www.aqa.org.uk/subjects/projects/project-qualifications/EPQ-7993>

For more information about this course or entry requirements please contact:
Mrs Wetton

Hospitality

This qualification will introduce you to essential understanding in the following areas of the hospitality industry:

- scale and diversity
- classification systems
- organisation and structure of businesses operating in this industry
- purpose of support functions in hospitality such as finance and marketing.

Qualification:

BTEC Nationals Hospitality
Subsidiary Diploma (Level 3)
Assessment through portfolios (coursework) and practical work – there is no written exam attached to this course. Students will study the following theory units:

- The Hospitality Industry
- Principles of Supervising Customer Service Performance in Hospitality, Leisure, Travel and Tourism
- Providing Customer Service in Hospitality
- Environment and sustainability in Hospitality

Students will study the following practical units:

- European Food (cooking from 6 different European countries)
- Asian Food (research and cooking from 6 different Asian countries)
- Contemporary World Food (research and modern cooking/ presentation techniques)

Progression Route:

University, apprenticeship or employment in hospitality, nutrition or healthcare.

For more information about this course or entry requirements please contact: Mrs Peacock



French

A Level French: You will gain a lasting appreciation of the language and will learn how to communicate in French to a number of different audiences. The A Level course gives you the opportunity to gain an insight into French speaking cultures, from modern everyday life to important aspects of French history.

- To develop an interest and enthusiasm for French language learning
- To communicate confidently, clearly and effectively in French for a range of purposes
- To develop awareness and understanding of the contemporary society, cultural background and Heritage of countries or communities where French is spoken

Year 12: Students will develop their grammatical knowledge from GCSE and will be encouraged to think and talk in greater depth about aspects of the society in the wider French speaking world. Students will be expected to keep up to date with current affairs relating to their chosen language in order to broaden their understanding and appreciation of the course. Students are encouraged to visit a country where their target language is spoken during year 12 either on a work experience or on a language study placement if and when possible.

Year 13 French: The second year of the course builds on the skills acquired in Year 12. Topics increase in breadth and depth, to include such areas as social issues (immigration, racism and integration). The focus is very much on the Francophone world and its context in society. Many themes are current and topical, including politics of today's youth, unemployment as well as the historical study of the politics, such as its monarchies, dictatorships etc. Students prepare for the challenge of writing at greater length, e.g. articles and essays.

Qualification:
A Level, AQA

Assessment:
70% Written Exam, 30% Speaking Exam

Progression Route:
University, apprenticeship or employment in any sector.

Web Link: <https://www.aqa.org.uk/subjects/languages/as-and-a-level/french-7652>

For more information about this course or entry requirements please contact: Miss Szuszman



Further Mathematics

If you really enjoy Mathematics or you wish to study a Mathematics, Physics or Engineering course at university then you should consider studying Further Mathematics. You will need a grade 7 or above in GCSE Mathematics and must be willing to spend much of your spare time studying this subject.

Further Mathematics must be combined with an A Level in Mathematics as it builds and extends the knowledge learnt in the single Maths A-Level.

The rewards for passing this course are great as the subject is highly regarded by universities. It shows that students can possess excellent problem-solving skills and are well organised in their own learning and development as a mathematician.

Further Mathematics should not be chosen lightly as it is a very challenging and difficult course.



Qualification:
A Level OCR B (MEI)

Assessment:
100% exam at the end of the 2-year course:

- Core Pure 50% (2hr 40mins) Modelling with Algorithms 162/3% (1 hr 15 mins)
- Statistics minor 162/3% (1hr 15mins)
- Numerical Methods 162/3% (1hr 15mins)

Progression Route:
University, apprenticeship or employment in maths, engineering or the sciences.

Web Link: <https://ocr.org.uk/qualifications/as-and-a-level/further-mathematics-b-meih635-h645-from-2017>

For more information about this course or entry requirements please contact: Mrs Mantle



Geography

There has never been a better or more important time to study A-level Geography. Learning about vital global issues makes it one of the most relevant subjects you could choose to study. Students enjoy the scope of the material they cover in Geography, the insights it can provide into the world around us and the highly contemporary nature of the issues it tackles. The Geography A-level is designed to excite your mind, challenge perceptions and stimulate your investigative and analytical skills.

To study A Level Geography, you need to have an enquiring and open mind. Geography is a study of the world around us and you need to be aware of issues worldwide, not just in the UK. You need to be able to debate issues and to think about them from political and social perspectives as well. Your opinion is important, but you also need to think about debates from someone else's perspective. Reading newspapers and articles to keep your subject knowledge up to date is vital.

A basic grasp of maths is required and the ability to interpret graphs and analyse them is fundamental, along with basic maps skills. You will learn specific case studies in depth and you will develop the skill of writing longer answers clearly and succinctly. Importantly, studying A-level Geography equips you with vital transferable skills that could open paths to many undergraduate degrees and careers.



Qualification:
AQA Geography A level

Assessment:

- Component 1: Physical geography (40%; Examination at the end of Year 13) Students will study the Water and carbon cycles, Coastal systems and landscapes and Hazards.
- Component 2: Human geography (40%; Examination at the end of Year 13) Students will study Global systems and global governance, Changing places and Contemporary urban environments.
- Component 3: Geography fieldwork investigation (20%; 3,000 – 4,000-word coursework)

Students complete an individual investigation which must include data collected in the field. The individual investigation must be based on a question or issue defined and developed by the student relating to any part of the specification content and is an exciting opportunity to develop in depth knowledge on an issue of their choosing. The investigation helps students develop transferrable skills and is respected by prospective employers and universities alike.

Progression Route:
University, apprenticeship and employment in a wide range of sectors.

Web Link: <https://www.aqa.org.uk/subjects/geography/as-and-a-level/geography-7037>

For more information about this course or entry requirements please contact:
Mrs Billson

Health and Social Care



Qualification:
Cambridge Technical Level 3 (2016 suite) Extended Certificate in Health and Social Care (1 A Level)

Assessment:
External and Internal assessment. Extended Certificate in Health and social Care: 3 external examinations and 3 coursework units

Progression Route:
University, apprenticeship or employment in nursing and other allied health professions, social work, healthcare and childcare.

Web Link: <https://www.ocr.org.uk/qualifications/cambridge-technicals/healthand-social-care1>

For more information about this course or entry requirements please contact: Ms Waddilove

The focus of the Health and Social Care course is to develop a foundation of skills and knowledge which can be used within a variety of care settings. The course covers a wide range of topics. A range of assessment techniques will be used including written examinations, projects, practical work, role plays and coursework assignments.

Students who choose this course develop many transferable skills and an understanding of a variety of care settings, job roles and the values of health and social care.

The course is divided into units which focus on general aspects of health and social care, e.g. Equality, Diversity and Rights, Safeguarding, Infection Control and Anatomy and Physiology.

The Health and Social Care sector offers a wide selection of career choices in a growing job market. Progression includes employment or further specialist training. Equally, students holding the Level 3 qualification will be prepared to enter university for a variety of degree courses such as nursing, paramedic science, occupational therapy and social work.



History

History is about people, their ambitions, successes and failures. It is about trying to understand why people acted in a certain way and why some events can change the direction of a nation, or even an entire continent. The A level course at MCA6 enables students to study the history of more than one country or state, as well as the study of British History. In addition to this, students will undertake a thematic study, which covers an extended period of history of approximately 100 years; and the coursework element enables students to explore an area of a topic that they are particularly interested in. Through the study of History, we aim to captivate learners and develop a desire within them to continue learning beyond the confines of the classroom.

Studying for a History A level qualification at MCA6 provides a fantastic opportunity to ignite and engage passions and interests in the pursuit of understanding more about the past. Through a varied range of teaching and learning activities delivered by subject specialists with particular expertise in the periods being taught, students will develop their skills of interpretation, analysis and evaluation. The course is designed to foster the development of intelligent and reflective thinking with an understanding of historical topics and issues; and to encourage an awareness of the importance of historical awareness in explaining contemporary issues. This course will help to create independent learners, critical thinkers and decision-makers – all personal assets that can make students stand out as they progress to Higher Education and/or the workplace. Students who take History have access to a range of careers including law, civil service, journalism and teaching.



Qualification:
OCR History A level

Assessment:

Unit 1 (25% examination at the end of Year 13) - British Period Study: Britain 1930-1997 - Enquiry Topic: Churchill 1930- 1951

Unit 2 (15%; Examination at the end of Year 13) - Non-British Period Study: The Cold War in Europe 1945-1991

Unit 3 (40%; Examination at the end of Year 13) - Thematic Study and Historical Interpretations: Popular Culture and the Witch Craze of the 16th and 17th Centuries

Unit 4 (20%; Coursework) – Topic-based Essay: Student choice of historical topic.

Progression Route:

University, apprenticeship or employment in range of areas including History, the social sciences and law.

Web Link: <http://www.ocr.org.uk/qualifications/as-a-level-gce-history-a-h105-h505-from-2015/>

For more information about this course or entry requirements please contact: Mrs Betts

Mathematics

The study of Mathematics involves careful reasoning which can be applied to many aspects of life, including voting trends, financial stability and climate change.

Mathematics A level is a valuable qualification for most careers and university courses. The list of such courses or careers would be endless but would certainly include the following: Mathematics, Engineering, Physics, Computing, Accountancy, Economics, Business, Banking, Air Traffic Control, Retail Management, Architecture, Surveying, Cartography, Psychology and, of course, Teaching.

A Level Mathematics B (MEI) is a linear qualification. The content is listed below, under three areas:

- 1 Pure mathematics includes proof, algebra, graphs, sequences, trigonometry, logarithms, calculus and vectors
2. Mechanics includes kinematics, motion under gravity, working with forces including friction, Newton's laws and simple moments.
3. Statistics includes working with data from a sample to make inferences about a population, probability calculations, using binomial and normal distributions as models and statistical hypothesis testing.

To study Mathematics is an exciting and challenging experience and you will need to be resilient and prepared to work hard. You will need a grade 6 or above at GCSE Mathematics to study A-Level Mathematics.



Qualification:
A Level OCR B (MEI)

Assessment:

100% Exams at the end of the 2-year course:

- Paper 1: Pure and mechanics - 331/3%
- Paper 2: Pure and statistics - 331/3%
- Paper 3: Pure and comprehension - 331/3%

Progression Route:

University, apprenticeship or employment in maths, engineering or the sciences.

Web Link: <http://ocr.org.uk/qualifications/as-a-level-gce-mathematics-b-mei-h630-h640-from-2017/>

For more information about this course or entry requirements please contact: Mrs Mantle

Media Studies

Media Studies offers students the chance to investigate the media and its place in the modern world. It combines academic rigour and creativity.

Students will be asked to view the media through a theoretical framework. They will need to demonstrate knowledge and understanding of the contexts of media and the influence of them on media products and processes. For example, students would be asked to consider the role of changing ideas about representations and identity in society and the impact that has on the media. Students will also need to analyse media texts including websites, TV and social media. They will analyse and compare how media products construct and communicate meanings through the interaction of media language and audience response. Furthermore, students will be required to debate key questions relating to the social, cultural, political and economic role of the media through discursive writing. The course will also require students to create media products for a specific audience.

The course offers students the opportunity to learn how to use media technology and then to utilise these skills when they create their own media products.



Qualification:
A Level OCR

Assessment:

70 % Exam, 30 % NEA

- Paper 1: Section A – in depth study of News (newspapers and websites) Section B – Media Language and Representation in Advertising, Magazines and Music video
- Paper 2: Section A – Media Industries and Audiences – Radio, Video Games and Film Section B – In depth study of Long Form TV Drama
- NEA: Students make a cross-media production of two different media products that is aimed at an intended audience. This will be accompanied by a Statement of Intent.

Progression Route:

University, apprenticeship or employment in media, film or the creative industries.

Web Link: <https://www.ocr.org.uk/qualifications/as-and-a-level/media-studies-h009-h409-from-2023/>

For more information about this course or entry requirements please contact: Mrs Roe

Music

This course is equivalent to one A-level. It is aimed primarily at students who are interested in developing practical musical skills together with music theory and industry knowledge. It is a highly practical course and is centred on performing, relevant music theory and industry practice.

This course attracts UCAS points in the same way as an A Level This is the perfect course for anyone who has a passion for popular music and the music industry. You will study solo and ensemble performance, music production, and music theory. Through integrated music projects, you will also learn about the music industry and how to plan for a successful career.



Ensemble Music Performance:

You will learn about good practice and preparation for rehearsal and performance through a series of worksheets, discussions, practical exercises and evaluation. - External Assessment

Practical Music Theory and Harmony:

You will learn about relevant music theory through a series of exercises and worksheets. Many of the exercises will be implemented practically. - Internal Assessment

Professional Practice in the Music Industry:

You will learn about the music industry through individual research, case studies and worksheets. - External Assessment

Music Performance Session Styles Sessions Styles:

involves you learning to perform in a range of different styles, for example Jazz, Punk, Reggae and Soul - as well as learning about the origins and musical influence of each of these genres. This will be through research, discussions, practical exercises, workshops and performances. - Internal Assessment

For more information about this course or entry requirements please contact: Mrs Sayer



Physical Education

The WJEC Eduqas A level in Physical Education equips learners with a depth and breadth of knowledge, understanding and skills relating to scientific, socio-cultural and practical aspects of physical education.

Learners are required to:

- * Develop theoretical knowledge and understanding of the factors that underpin physical activity and sport and use this knowledge to improve performance.
- * Understand how physiological and psychological states affect performance
- * Understand the key socio-cultural factors that influence people's involvement in physical activity and sport
- * Understand the role of technology in physical activity and sport
- * Refine their ability to perform effectively in physical activity and sport by developing skills and techniques and selecting and using tactics, strategies and/or compositional ideas
- * Develop their ability to analyse and evaluate to improve performance *
- Understand the contribution which physical activity makes to health and fitness
- * Improve as effective and independent learners and as critical and reflective thinkers with curious and enquiring minds.

This specification has been designed to allow learners to develop an appreciation of physical education in a wide range of contexts. The specification is designed to integrate theory and practice with an emphasis on the application of theoretical knowledge. Learners will develop an understanding of how the various theoretical concepts impact on their own performance, through the integration of theory and practice.

The specification focuses on five key knowledge areas:

- Exercise physiology, training and performance
- Movement analysis, technology and biomechanics
- Sport psychology
- Skill acquisition
- Sport and society



For more information about this course or entry requirements please contact: Mr Burt

Qualification:

WJEC Eduqas GCE A-Level in Physical Education.

Assessment:

- Component 1: Exploring concepts in physical education. 2-hour exam. 35% of qualification
- Component 2: Evaluating physical education. 2-hour exam. 35% of qualification.
- Component 3: Improving personal performance in physical education. Practical performance in one sport as a player of coach. 30% of qualification.

Progression Route:

University to study sport and exercise science, physiotherapy, human biology. Apprentice in any sport-based sector.

Web Link: <https://www.eduqas.co.uk/eduqas-a-level-physical-education>.

Physics

Physicists explore the fundamental nature of almost everything we know of. They probe the furthest reaches of the earth to study the smallest pieces of matter. Physics like all sciences, is a practical subject. Throughout the course you will carry out practical activities to support and develop your understanding of the theory.

You will study topics including; measurements and their errors, particles and radiation, waves, mechanics and energy, electricity, further mechanics and thermal physics, fields and nuclear physics.

Physics is a highly respected A-Level, it demonstrates to future employers that you have analytical and mathematical skills and the ability to apply them to real life situations. A good grade in A-Level physics could lead to careers in engineering, medicine, astronomy, electronics and many more.

Qualification:

AQA A Level Physics

Assessment:

3 written examinations at the end of year 13. Assessment of practical skills throughout the course.

Progression Route:

University, apprenticeship or employment in maths, engineering or the sciences.

Web Link: <https://www.aqa.org.uk/subjects/science/as-and-a-level/physics-7407-7408>

For more information about this course or entry requirements please contact: Mrs Wetton



Politics

This course will give you valuable insights into the world of political ideas, processes and key institutions. There can be no better time to study Politics due to the rapidity of change in the world. The loss of confidence in governments in the West and the rise of populist political movements, the breakdown of governments in the Middle East, and Brexit, are all events which point to a crisis in domestic and international politics, and have and will continue to touch our lives. A successful student of Politics will leave the course with a developing knowledge of both domestic and international issues, and will have the skills necessary to make effective contributions to future political debates.

There are three broad areas of study:

- The government and politics of the UK
- The government and politics of the USA
- Political ideas

The course asks you to identify parallels, connections, similarities and differences between aspects of politics. This will ensure that you develop a critical awareness of the changing nature of politics and the relationships between political ideas, political institutions and political processes. The political ideas to be studied have relevance to both the systems of government and politics in both the UK and the USA. The study of political ideas is an integral part of the course, teaching you to analyse, interpret and evaluate political information to form rounded arguments and make mature judgements about all aspects of political life and difficult course.



Qualification:

Edexcel Politics A Level

Assessment:

here are three equally weighted exams. These are two hours long.

- Paper 1: UK Politics / Core Political Ideas
- Paper 2: UK Government / Non-core Political Ideas
- Paper 3: Comparative Politics - USA study

Progression Route:

University, apprenticeship or employment in a range of areas including Politics, History, Social Sciences and Law.

Web Link: [https://qualifications.pearson.com/content/dam/pdf/A%20Level/ Politics/2017/Specification%20 and%20 sample%20assessments/A-level-PoliticsSpecification.pdf](https://qualifications.pearson.com/content/dam/pdf/A%20Level/Politics/2017/Specification%20and%20sample%20assessments/A-level-PoliticsSpecification.pdf)

For more information about this course or entry requirements please contact:
Mrs Betts

Psychology

Qualification:

GCE A Level, AQA, 7181/7182

Assessment:

100% External Examinations.

Progression Route:

University, apprenticeship or employment in range of areas including psychology, the social sciences and law.

Web Link: <http://www.aqa.org.uk/subjects/psychology/as-and-a-level/psychology-7181-7182>

For more information about this course or entry requirements please contact:
Miss Lavender

Psychology is the study of the human mind and behaviour. It attempts to answer the fundamental question, "Why do people behave the way they do?" Psychologists approach this in different ways, they might take a cognitive, biological, behavioural or social approach. This course introduces a selection of major psychological theories and research. Contrasting theories will be critically discussed, analysed and evaluated, giving an insight into human behaviour and providing a range of perspectives, experiments and case studies through which it can be considered.

The course content is below –

- Paper 1: Introductory Topics - Social Influence; Memory; Attachment; Psychopathology
- Paper 2: Psychology in Context - Approaches in Psychology; Biopsychology; Research Methods
- Paper 3: Issue in Psychology - Gender; Schizophrenia; Forensic Psychology



Sociology

Sociology is the study of society. In particular it is the study of those institutions and social groups which influence our behaviour, such as family, class and the mass media. Sociologists look at how these institutions shape our individual beliefs and values. As members of society, you come to the course with attitudes and values, having taken part in social interaction with friends, family and strangers. This means you already have an insight into the subject!

In Sociology, you will gain valuable understanding of how and why different social groups act in different situations. You will also learn about different sociological approaches and how this influences sociological methodology. Besides acquiring a deep level of knowledge, you will develop and improve your essay writing technique along with evaluative, analytical and research skills. These are valuable transferable skills and will prepare you for a range of careers.

The course content is below –

- Paper 1: Education with Theory and Methods
- Paper 2: Family and households; The media
- Paper 3: Crime and Deviance with Theory and Methods

Qualification:
GCE A Level, AQA

Assessment:
100% External Examinations.
A level (Paper 1, 2 and 3 at the end of Year 13)

Progression Route:
University, apprenticeship or employment in range of areas including the social sciences, criminology and law.

Web Link: <http://www.aqa.org.uk/subjects/sociology/as-and-a-level/sociology-7191-7192>

For more information about this course or entry requirements please contact: Miss Lavender



Spanish

A Level Spanish: The A Level course focuses on developing oral fluency, listening, reading and writing skills, plus translation tasks; all of which are vital tools for further study. You will develop and enhance your communication skills and your ability to be an independent learner.

- To develop an interest and enthusiasm for Spanish language learning
- To communicate confidently, clearly and effectively in Spanish for a range of purposes
- To develop awareness and understanding of the contemporary society, cultural background and heritage of countries or communities where Spanish is spoken

Year 12: Students will develop their grammatical knowledge from GCSE and will be encouraged to think and talk in greater depth about aspects of the society in the wider Hispanic speaking world. Students will be expected to keep up to date with current affairs relating to their chosen language in order to broaden their understanding and appreciation of the course. Students are encouraged to visit a country where their target language is spoken during Year 12 either on a work experience or on a language study placement if and when possible.

Year 13: The second year of the course builds on the skills acquired in Year 12. Topics increase in breadth and depth, to include such areas as social issues (immigration, racism and integration). The focus is very much on the Hispanic world and its context in society. Many themes are current and topical, including politics of today's youth, unemployment as well as the historical study of the politics, such as its monarchies, dictatorships etc. Students prepare for the challenge of writing at greater length, e.g. articles and essays..

Qualification:
A Level, AQA

Assessment:
70% Written Exam, 30% Speaking Exam

Progression Route:
University, apprenticeship or employment in any sector.

Web Link: <https://www.aqa.org.uk/subjects/languages/as-and-a-level/spanish-7692>

For more information about this course or entry requirements please contact: Miss Szuszman



Sports Studies

Sports Studies has undergone comprehensive development in recent years to improve links to higher education and careers in the sports and active leisure industry. The new and improved courses have specifically been designed to meet the needs of the ever-changing environment within this sector.

We are excited to offer two pathways at MCA6; the National Extended Certification (single award) and the National Diploma (double award). The single award comprises Anatomy and Physiology, Fitness Training and Programming, Professional Development of the Sports Industry and Sports Leadership. In addition to these units, students embarking on the double award also study Coaching for Performance, Skill Acquisition in Sports, Business in the Sport and Leisure Industry, Sports Psychology and Sports Injury Management.

The units have been designed by specialists in the field with the aim of challenging the physical and mental capabilities of each student. Successful completion of the course will enable learners to progress to higher education to study a range of disciplines, such as sports coaching, sports science and physiotherapy. Other potential routes post-18 include apprenticeships and sports-specific scholarships.



Qualification:

Pearson BTEC Level 3 National Extended Certificate in Sport
Pearson BTEC Level 3 National Diploma in Sport

Assessment:

Single: 4 units of which 3 are mandatory and 2 are external. Mandatory content (83%). External assessment (67%). 2 units contain written exams/set tasks and there are 2 coursework units.

Double: 9 units of which 6 are mandatory and 3 are external. Mandatory content (75%). External assessment (45%). 3 units contain written exams/set tasks and there are 6 coursework units.

Progression Route:

University, apprenticeship or employment in sport, exercise or fitness.

Web Link: <http://qualifications.pearson.com/en/qualifications/btec-nationals/sport-2016.html>

For more information about this course or entry requirements please contact: Mr Burt

Personal Tutor/Student Support



Student Support

Guidance is provided to MCA6 students through our pastoral and academic programmes which work alongside each other to support our students throughout their Sixth Form journey.

Students also have access to the academy's Learning Support team, careers advisor, the school nursing team and the Academy's safeguarding team. As a team we work together supporting individuals on their pathway through Sixth Form.

Personal Tutor

Year 12 and Year 13 students have a Personal Tutor who reviews their academic achievements, sets targets to support progression and discuss wider, relevant issues. Students have twice weekly morning meetings as well as weekly assembly. Students will cover a wide range of topics including the university and apprenticeship application process, pastoral issues and preparation for life after sixth form. The pastoral programme includes fortnightly SKL lessons, assemblies, presentations and workshops from visitors and educational visits.

MCA6 Facilities

Laptops- We are pleased to announce that from September 2025, all of our MCA6 students will be provided with their own laptop to use throughout their time at MCA6, the laptop can be used during the school day and for home study.

MCA6 Gym- All MCA6 students have access to the MCA6 gym during their non-contact time and afterschool.

MCA6 Alumni

'My experience at MCA6 was hugely positive. The one-to-one support I received made such a difference—it always felt like there was someone willing to help, no matter the challenge. The staff were approachable and supportive both academically and personally, and it never felt like any question was too much to ask. Sixth form is what you make it, and at MCA6 I felt encouraged every step of the way to push myself and aim high. That support played a big part in helping me achieve results I'm proud of and secure a place at medical school.'

'I chose to study at MCA6 for its community. Having studied at MCA previously, I already knew how supportive the teachers were and felt comfortable in the environment. Sixth form here was very close-knit which helped massively academically and personally too! It was super easy to make friends and access staff support which made my sixth form experience more enjoyable. Though I looked at other places, in the end I think I made the best decision as MCA6 was an amazing environment to thrive in.'

'My time at MCA6 gave me so much more than just good grades - it gave me confidence, support, and a genuine love for learning. The teachers were passionate about their subjects and always had time for us. Their open-door approach, encouragement, and the resources they shared made a real difference. It was a place where I could be myself, try new things, and actually enjoy learning. I'm now at university, and I often think about how well my sixth form prepared me - not just academically, but personally too.'

MCA6

Sixth Form Centre



Mildenhall College
ACADEMY



Academy
Transformation
Trust

Mildenhall College Academy

Sixth Form Centre
Sheldrick Way, Mildenhall,
Suffolk. IP28 7JX

Telephone: 01638 714645

email: mca-reception@attrust.org.uk

www.mildenhall.attrust.org.uk

Follow us on X @MilCollege

Like us on Facebook @MildenhallCollegeAcademy

www.mildenhall.attrust.org.uk